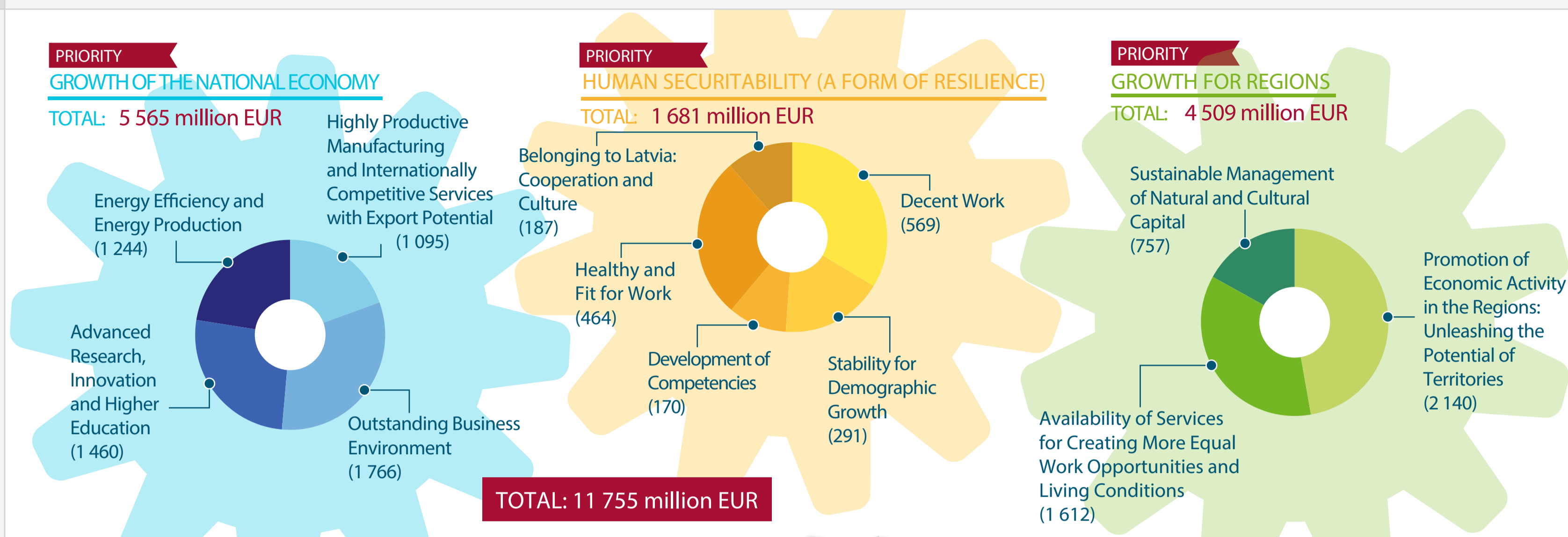


NATIONAL DEVELOPMENT PLAN

NAP2020: PUBLIC DISCUSSION

- More than **4 000** NDP ideas
- More than **831** comments online at www.nap.lv
- 601** comments from ministries and state institutions (activity worth more than LVL 18.6 bn)
- More than **240** comments submitted by the Saeima
- 1 666** proposals from institutions, organisations and private individuals (online, letters)
- Several hundred** suggestions in e-mails and letters from NGOs
- Numerous direct meetings with NGOs
- 6** regional discussions

PLANNED FUNDING TO IMPLEMENT NDP2020 STRATEGIC OBJECTIVES (LVL MILLION)



NAP2020 STRATEGY

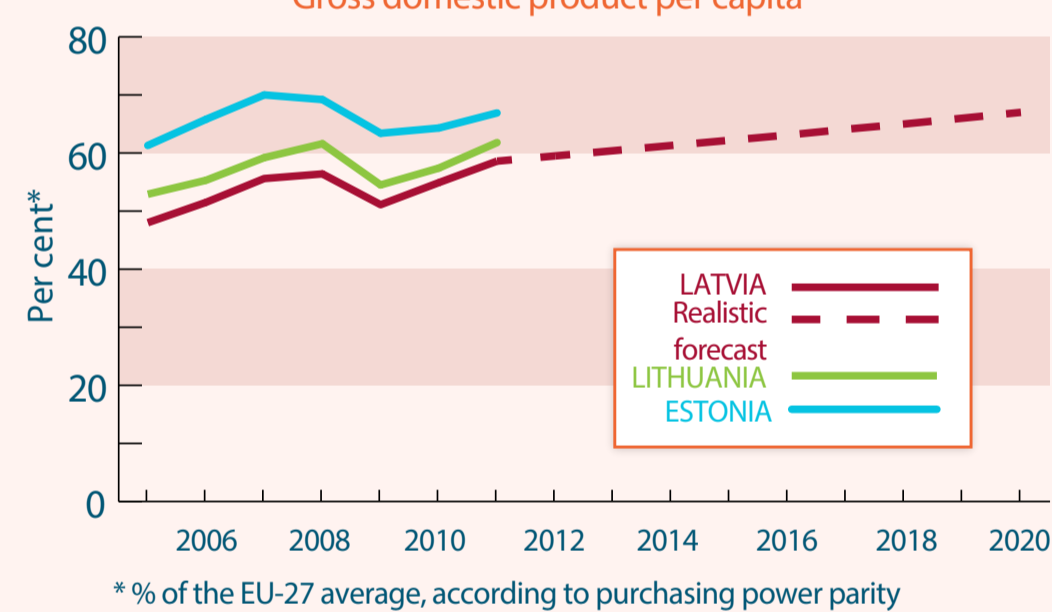
ECONOMIC BREAKTHROUGH



The NDP contains **98** measures

HIGHER INCOME

Gross domestic product per capita

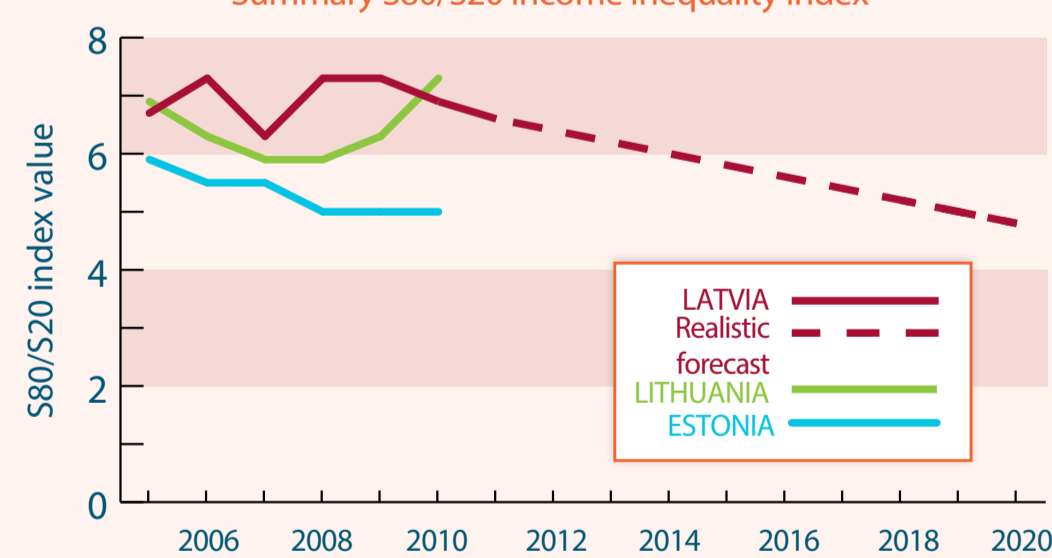


LATVIA
Realistic forecast
LITHUANIA
ESTONIA

*% of the EU-27 average, according to purchasing power parity

DIMINISHING INEQUALITY

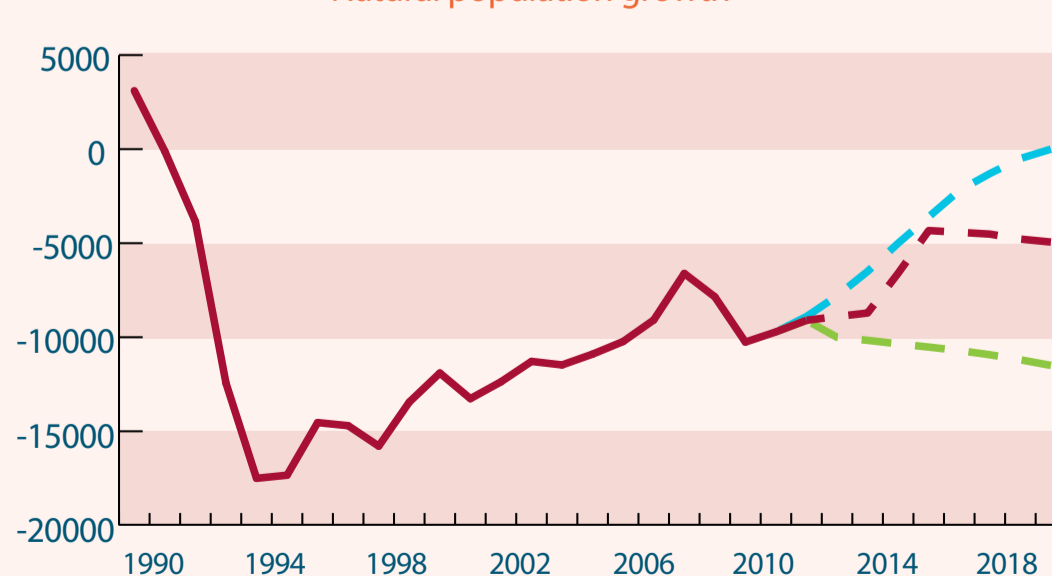
Summary S80/S20 income inequality index



LATVIA
Realistic forecast
LITHUANIA
ESTONIA

MORE CHILDREN ARE BORN AND PEOPLE LIVE LONGER

Natural population growth



Actual observation
Realistic forecast
Preferable scenario
Long-term workforce projection by the Ministry of Economics

NATIONAL ECONOMY

HIGHLY PRODUCTIVE MANUFACTURING AND INTERNATIONALLY COMPETITIVE SERVICES WITH EXPORT POTENTIAL

Foreign direct investment in "marketable" sectors (percentage of all incoming foreign direct investment)	2011	2014	2017	2020	2030
	59.3	62	64	66	>75

OUTSTANDING BUSINESS ENVIRONMENT

Number of economically active business entities	65629 (2010)	67000	75000	80000	90000
Civil matters in accordance with procedures regarding actions adjudicated within up to 12 months in all the courts of the first instance (% of all matters)	73.2	80	85	92	96
Latvia's position in the Doing Business Index	21	20	17	13	11

ADVANCED RESEARCH, INNOVATION AND HIGHER EDUCATION

European patent applications by researchers residing in Latvia	11	13	18	26	35
Turnover of innovative products (as a percentage of the total turnover)	5.9 (2008)	8	9	11	>14

ENERGY EFFICIENCY AND ENERGY PRODUCTION

Proportion of energy produced from renewable energy resources in the total gross energy consumption reaching at least 40% in 2020	34.3	35	37	40	-
Energy dependence: net energy resource imports/gross domestic energy consumption, plus bunkering (%)	41.6 (2010)	42.4	43.2	44.1	<50

HUMAN SECURITY (A FORM OF RESILIENCE)

EMPOWERMENT

DECENT EMPLOYMENT EARNS HIGHER INCOME

Rate of employment in the 20 to 64 age group (%)	2011	2014	2017	2020	2030
	67	69.6	72	73	>75

STABLE FOUNDATIONS FOR DEMOGRAPHIC GROWTH

A COMPREHENSIVE SUPPORT SYSTEM FOR FAMILIES IS IN PLACE TO ENCOURAGE MORE BIRTHS	Share of the population living in families with two or more minor children (%)	2011	2014	2017	2020	-
		15.7	17.5	19.0	22.0	-

BALANCING FAMILY AND WORK: HOUSEHOLDS HAVE SUFFICIENT INCOME AND PARENTS CAN SPEND MORE TIME WITH CHILDREN

Poverty risk index for children (aged 0-17)	22.8 (2010)	24	22	19	-

EDUCATION: A PATH TO QUALITY EMPLOYMENT

Ratio of students in general secondary education and vocational education programmes after completing elementary education	61/39 (Acad. yr. 2011/2012)	60/40	55/45	50/50	50/50

CARING FOR HEALTH - AN INVESTMENT IN ONE'S OWN FUTURE

Percentage of people engaged in physical activities or sports 1-2 times a week	27 (2009)	30	35	40	60
Share of working age persons who have abused alcohol (%)	43.7	43.7	40	38	35
Prevalence of a regular smoking habit at the age of 15 (%)	26.9 (2010)	25.5	24.5	22	18.5

TIMELY AND ACCESSIBLE HEALTHCARE

Percentage of the population of working age who have visited a general practitioner at least once during the last year	65.1 (2010)	66	70	74	75

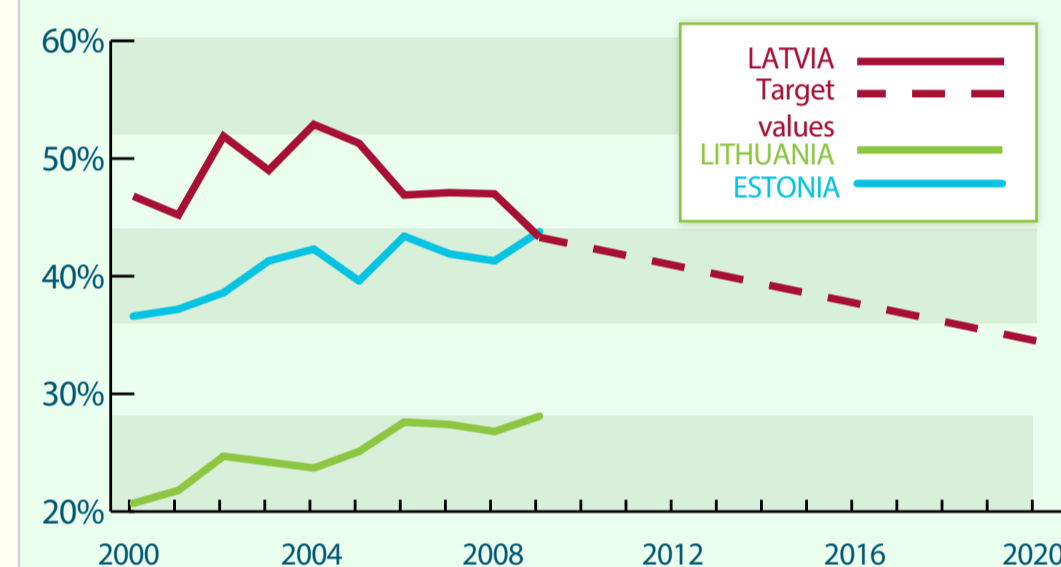
PROMOTION OF COOPERATION AMONG PEOPLE AND BELONGING TO LATVIA

Pride in belonging to Latvia (%)	59.9 (2010)	62	65	70	-
Mutual trust among the population (%)	46 (2009)	50	56	62	-

GROWTH FOR REGIONS

REGIONAL INEQUALITY DIMINISHES

Dispersion of regional GDP per capita



NEW BUSINESSES AND JOBS ARE CREATED IN THE REGIONS

Economically active entities of the market sector in the regions, per 1 000 of the population (more companies and jobs)	Base value (year)	2014	2017	2020
Avg. for Latvia	64.2	65	72	75
Riga	70.7	72	80	83
Vidzeme	66.5	67	75	78
Kurzeme	61.5	62	69	72
Zemgale	53.3	54	60	63
Latgale	52.8	53	59	62
Percentage of job-seekers in the statistical regions outside Riga	14	13	12	11
Greater Riga	13	12	11	10
Vidzeme	15	14	13	12
Kurzeme	18	17	15	14
Zemgale	19	17	16	14
Latgale	19	17	16	14

WORKPLACE AND SERVICES CAN BE REACHED CONVENIENTLY AND SAFELY

Reduction in major state motor road segments in a poor or very poor condition (%)	Year	2014	2017	2020	2030
	0 (2012)	15	28	50	100
Reduction in regional paved motor road segments in a poor or very poor condition (%)	0 (2012)	5	20	50	85
Percentage of households with access to the internet	63.6 (2012)	70	75	80	95

NATURAL RESOURCES ARE PRESERVED AND USED SUSTAINABLY

Percentage of cultivated land in the total area of agricultural land	87.9 (2011)	90	92	95	-
Share of processed waste (%)	40 (2011)	43	47	>50	>80
Number of foreign tourists staying four or more days (million/year)	0.4 (2008)	0.5	0.75	1	>1.5